

Cottages 1 & 2 (duplexes)

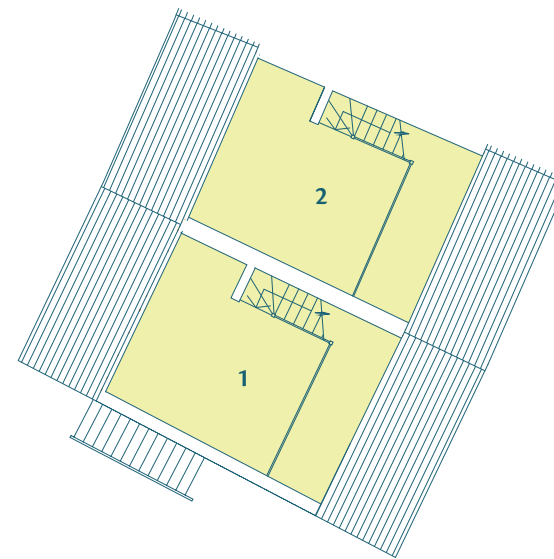
Ground Floor



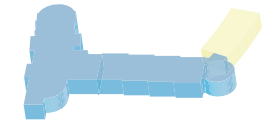
First Floor



Gallery



FLOOR PLANS THE COTTAGES



Cottages 1 & 2

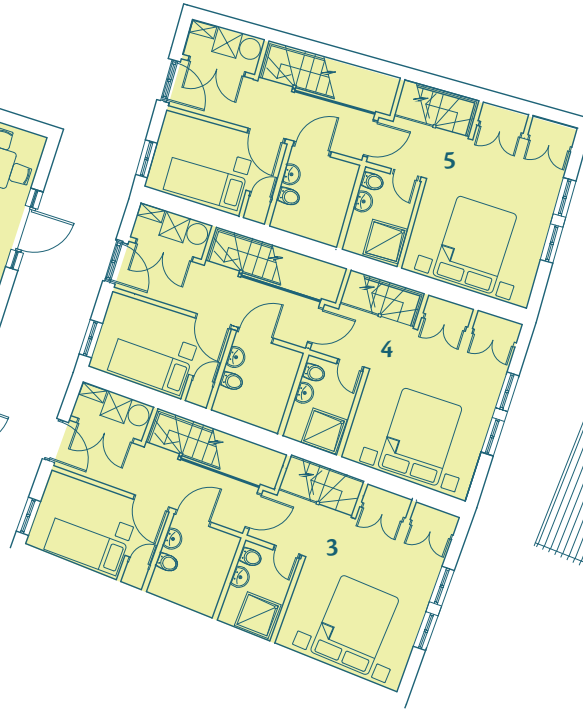
	m	ft
Living room	4.45 x 4.26	14' 7" x 14' 0"
Kitchen	2.54 x 2.26	8' 4" x 7' 5"
Bedroom 1	3.96 x 3.12 (plus recess)	13' 0" x 10' 3" (plus recess)
Bedroom 2	3.55 x 2.97	11' 8" x 9' 9"
Bedroom 3	2.6 x 1.9	8' 7" x 6' 4"
Gallery	4.36 x 3.3 (plus recess)	14' 4" x 10' 10" (plus recess)

Cottages 3,4 & 5 (duplexes)

Ground Floor



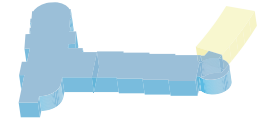
First Floor



Gallery



FLOOR PLANS THE COTTAGES



Cottages 3,4 & 5 (duplexes)

	m	ft
Living room	4.45 x 4.26	14' 7" x 14' 0"
Kitchen	2.54 x 2.31	8' 4" x 7' 7"
Bedroom 1	3.86 x 3.12 (plus recess)	12' 8" x 10' 3" (plus recess)
Bedroom 2	2.95 x 1.87	9' 8" x 6' 2"
Bedroom 3	3.025 x 2.20	9' 11" x 7' 3"
Gallery	4.37 x 3.25 (plus recess)	14' 4" x 10' 8" (plus recess)

GaraRock
Salcombe www.gararock.com

Disclaimer: Floor plans show approximate dimensions for each room, however, variations within Premier Guarantee guidelines may occur. Where dimensions are critically important to you, you must refer to the actual size of the rooms as and when constructed as Coast Group cannot at pre-construction stage guarantee precise dimensions. In accordance with the RICS, Code of Measuring Practice and Property Misdescriptions Act 1991 all measurements include areas where the floor to ceiling height equals or exceeds 1.5m.

Coast
Coast Group