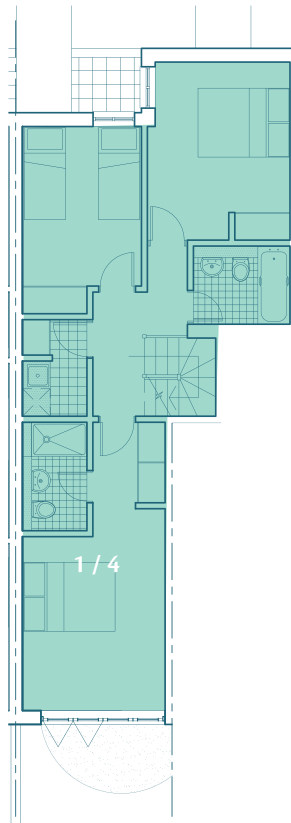


FLOOR PLANS

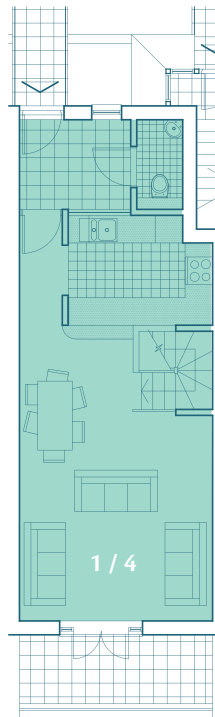
THE SOUTH WING

Apartments 1 & 4 (duplexes)

Ground Floor



First Floor



Apartments 1 & 4

	m	ft
Living room	6.4 (max) x 4.2	20'10" x 13'8"
Kitchen	2.35 x 3.1	7'8" x 10'1"
Bedroom 1	4.35 x 3.1	14'2" x 10'1"
Bedroom 2	3.85 x 3.1 (max)	12'7" x 10'1"
Bedroom 3	3.45 x 2.55	11'3" x 8'4"

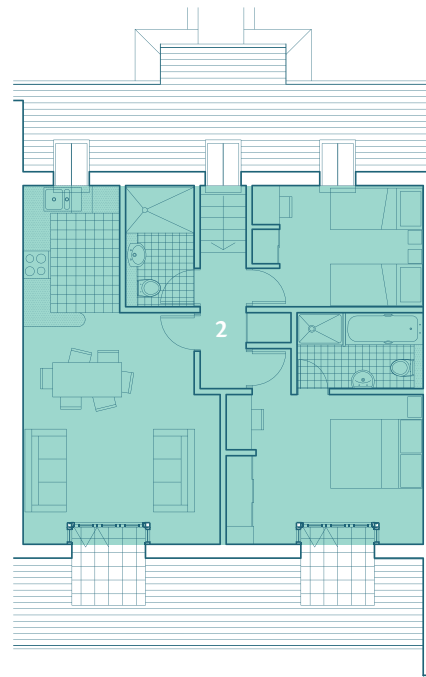
Disclaimer: Floor plans show approximate dimensions for each room, however, variations within Premier Guarantee guidelines may occur. Where dimensions are critically important to you, you must refer to the actual size of the rooms as and when constructed as Coast Group cannot at pre-construction stage guarantee precise dimensions. In accordance with the RICS, Code of Measuring Practice and Property Misdescriptions Act 1991 all measurements include areas where the floor to ceiling height equals or exceeds 1.5m.

FLOOR PLANS

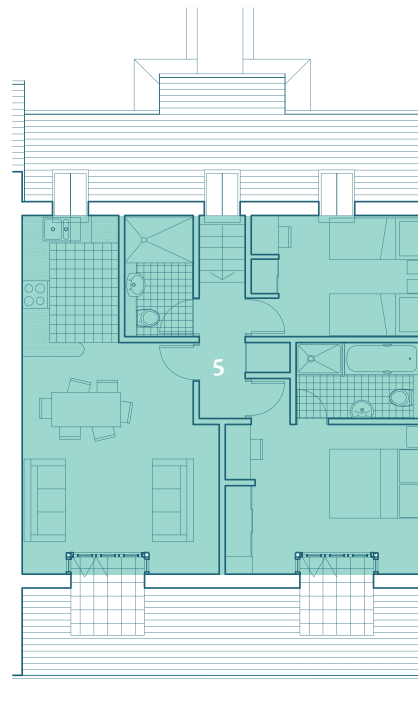
THE SOUTH WING

Apartments 2 & 5

Second Floor



Second Floor



Apartments 2 & 5

	m	ft
Living room	5.05 (max) x 4.3 (max)	16'6" x 14'0"
Kitchen	2.7 x 2.1	8'10" x 6'10"
Bedroom 1	3.65 x 3.2	12'0" x 10'5"
Bedroom 2	2.5 x 3.7 (max)	8'2" x 12'1"

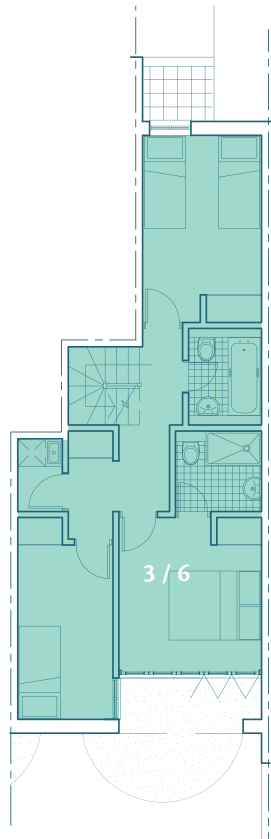
Disclaimer: Floor plans show approximate dimensions for each room, however, variations within Premier Guarantee guidelines may occur. Where dimensions are critically important to you, you must refer to the actual size of the rooms as and when constructed as Coast Group cannot at pre-construction stage guarantee precise dimensions. In accordance with the RICS, Code of Measuring Practice and Property Misdescriptions Act 1991 all measurements include areas where the floor to ceiling height equals or exceeds 1.5m.

FLOOR PLANS

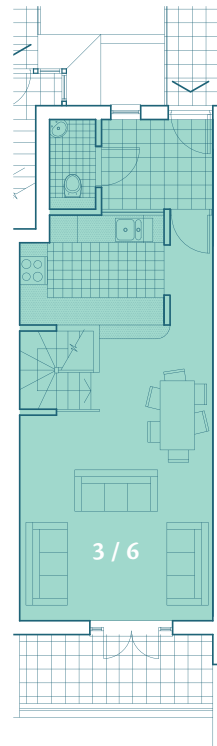
THE SOUTH WING

Apartments 3 & 6 (duplexes)

Ground Floor



First Floor



Apartment 3 & 6

	m	ft
Living room	6.4 (max) x 4.2	20'10" x 13'8"
Kitchen	2.35 x 3.1	7'8" x 10'1"
Bedroom 1	3.35 x 3.1	10'11" x 10'1"
Bedroom 2	4.05 (max) x 2.55	13'2" x 8'4"
Bedroom 3	3.8 x 2.1	12'5" x 6'10"

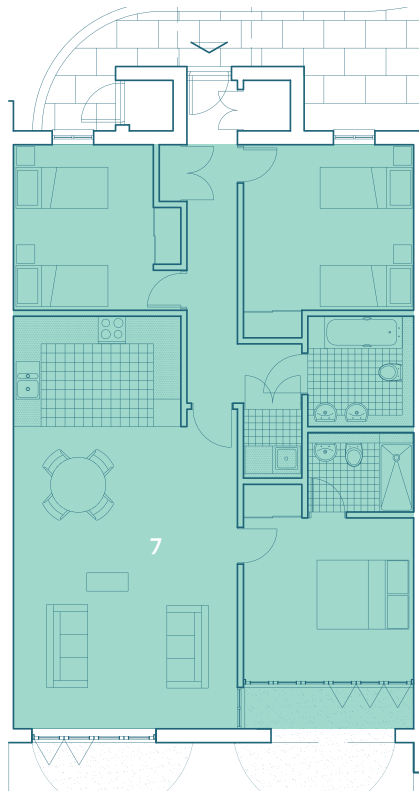
Disclaimer: Floor plans show approximate dimensions for each room, however, variations within Premier Guarantee guidelines may occur. Where dimensions are critically important to you, you must refer to the actual size of the rooms as and when constructed as Coast Group cannot at pre-construction stage guarantee precise dimensions. In accordance with the RICS Code of Measuring Practice and Property Misdescriptions Act 1991 all measurements include areas where the floor to ceiling height equals or exceeds 1.5m.

FLOOR PLANS

THE SOUTH WING

Apartment 7 (garden apartment)

Ground Floor



Apartment 7 (garden apartment)

	m	ft
Living room:	6.55 x 4.85	21'5" x 15'10"
Kitchen:	2.4 x 3.65	7'3" x 12'0"
Bedroom 1:	3.7 x 3.55	12'1" x 11'7"
Bedroom 2:	3.65 x 3.6	12'0" x 11'10"
Bedroom 3	3.05 x 3.65 (max)	10'0" x 12'0"

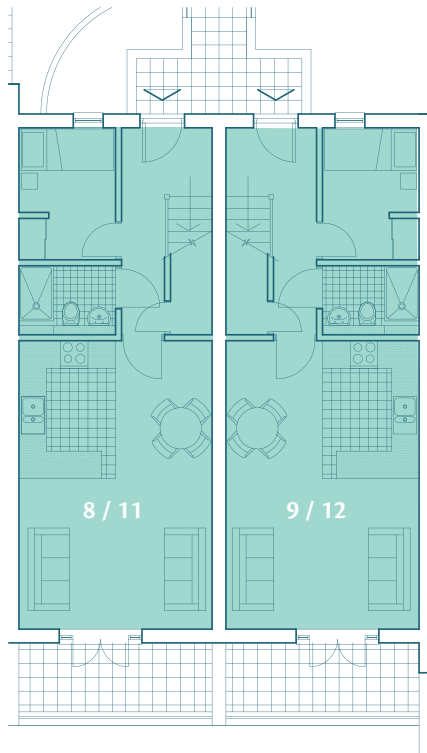
Disclaimer: Floor plans show approximate dimensions for each room, however, variations within Premier Guarantee guidelines may occur. Where dimensions are critically important to you, you must refer to the actual size of the rooms as and when constructed as Coast Group cannot at pre-construction stage guarantee precise dimensions. In accordance with the RICS Code of Measuring Practice and Property Misdescriptions Act 1991 all measurements include areas where the floor to ceiling height equals or exceeds 1.5m.

FLOOR PLANS

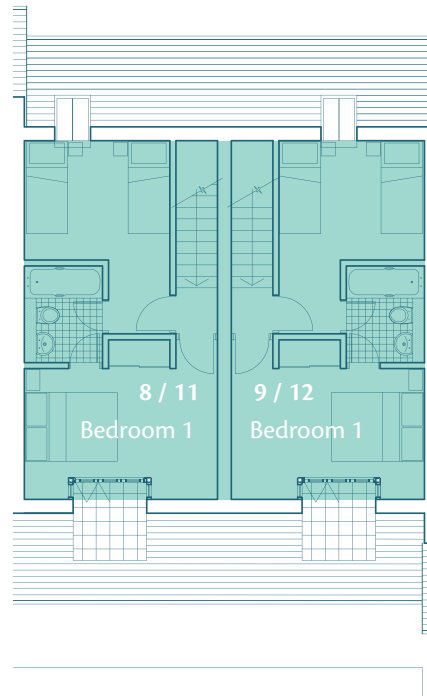
THE SOUTH WING

Apartments 8, 9, 11 & 12 (duplexes)

First Floor



Second Floor



Apartments 8, 9, 11 & 12

	m	ft
Living room/kitchen	6.2 x 4.2	20'3" x 13'8"
Bedroom 1	2.8 (max) x 4.2	9'2" x 13'8"
Bedroom 2	2.55 x 3.15	8'4" x 10'3"
Bedroom 3	2.85 x 2.10	9'4" x 6'10"

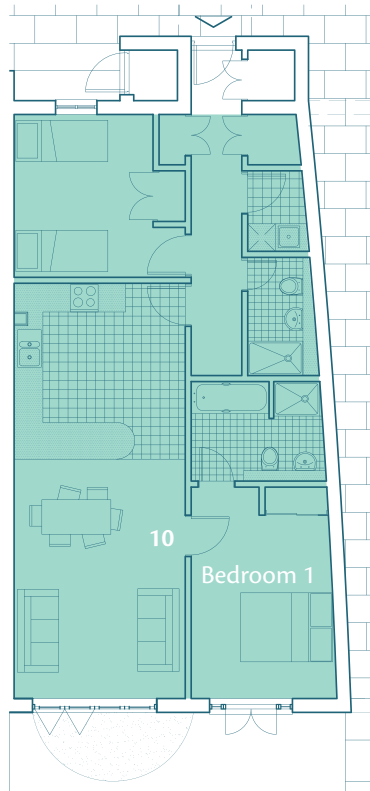
Disclaimer: Floor plans show approximate dimensions for each room, however, variations within Premier Guarantee guidelines may occur. Where dimensions are critically important to you, you must refer to the actual size of the rooms as and when constructed as Coast Group cannot at pre-construction stage guarantee precise dimensions. In accordance with the RICS Code of Measuring Practice and Property Misdescriptions Act 1991 all measurements include areas where the floor to ceiling height equals or exceeds 1.5m.

FLOOR PLANS

THE SOUTH WING

Apartment 10 (garden apartment)

Ground Floor



Apartment 10 (garden apartment)

	m	ft
Living room:	5.2 x 3.7	17'0" x 12'1"
Kitchen:	3.8 x 3.7	12'5" x 12'1"
Bedroom 1:	4.55 (max) x 3.05 (avg)	14'10" x 10'0"
Bedroom 2:	3.55 x 3.05	11'7" x 10'0"

Disclaimer: Floor plans show approximate dimensions for each room, however, variations within Premier Guarantee guidelines may occur. Where dimensions are critically important to you, you must refer to the actual size of the rooms as and when constructed as Coast Group cannot at pre-construction stage guarantee precise dimensions. In accordance with the RICS, Code of Measuring Practice and Property Misdescriptions Act 1991 all measurements include areas where the floor to ceiling height equals or exceeds 1.5m.